



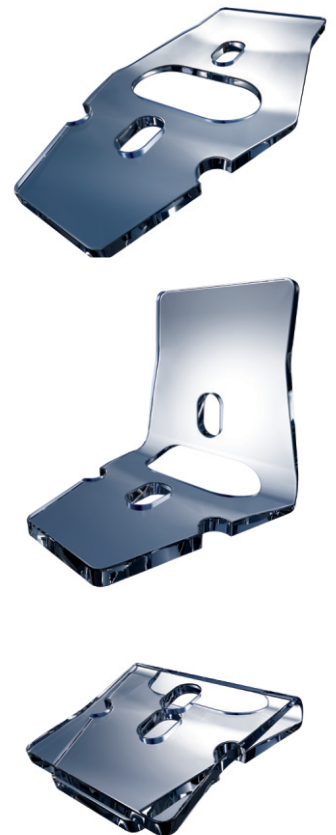
ESNOOPER CLIP

The future of vision



ESNOOPER CLIP

<i>Reference</i>	VCLIP-AJL
<i>Brand name</i>	ESNOOPER CLIP
<i>Definition</i>	Uveoscleral implant "ESNOOPER CLIP".
<i>Indication</i>	The uveoscleral implant ESNOOPER CLIP is indicated for non-perforating deep sclerectomy (NPDS) in open angle glaucoma surgery.
<i>Product description</i>	<p>The ESNOOPER CLIP is an scleral implant specifically designed for the technique of deep sclerectomy in open angle glaucoma. Its purpose is to provide a fixed space to facilitate and extend the drainage of aqueous humor in patients suffering from open-angle glaucoma.</p> <p>The scleral implant ESNOOPER CLIP allows two-way drainage pathways, trabecular (intrascleral and supraciliary) and uveoscleral, inserting a plate into the suprachoroidal bag and positioning the other on the scleral flap to improve the flow out of aqueous humour through them.</p>
<i>Total height</i>	5.50 mm
<i>Thickness</i>	0.20 mm
<i>Suprachoroidal side length</i>	1.30 mm
<i>Base length</i>	2.20 mm
<i>Suture hole</i>	Scleral fixation
<i>Longitudinal hole</i>	Drainage
<i>Material</i>	Hydroxyethyl Methacrylate (HEMA).
<i>Sterilization method</i>	Steam
<i>Supply</i>	The implant ESNOOPER CLIP is single sterile packed, easy to open, immersed in highly purified water, and placed in special forceps so that the implant is visible and has an optimum access for its handling.
<i>Expiration</i>	3 years



CE 0434

Imported & Marketed by

Lensai Ahmedabad 380051
 info@lensai.in | www.lensai.in
thrust on service